

# VIDEO MICROSCOPE

## MODEL 7310

### Functions:

#### **Handy Type Easy to Operate**

It can be held by hand easily to view the object in clear image without adjusting the focus.

#### **Picture Freeze**

You can freeze the frame and release it easily by touching the frame freeze button on the handle. Besides, you are also able to use remote cord to freeze the frame via the terminal on the rear panel.

#### **Frame Split**

If you need to compare two objects, you can choose one-two frame on the screen by switching the "Memory" to "2".

#### **Measurement for Multiple Masks**

The mask designed for multiple functions can be used with magnification lens to observe the object with non-contact, contact and oblique for three-dimension effect.

#### **Fully Field Use**

It provides complete lens combination from magnification 5X to 1000X with maximum working distance up to 18cm. To work with appropriate accessories and measurement software, the Measurement Master, it can meet the different requirements for various industries.

#### **Multiple Peripherals Support**

The 7310 can connect diverse recording media, color displays, and PC environment (with appropriate interface card installed) via the video out terminal. You can select the desired peripheral.



# VIDEO MICROSCOPE

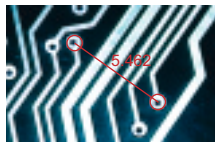
## INDUSTRIAL APPLICATIONS

Resistor



20X Contact

PCB



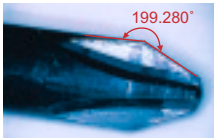
20X Non-contact  
with Measurement Master

Connector



20X Non-contact

Screw Driver



40X Contact  
with Measurement Master

SMD



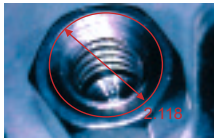
40X Oblique

Capacitor



100X Non-contact  
with Measurement Master

Screw



100X Non-contact  
with Measurement Master

LED



100X Non-contact

Textile



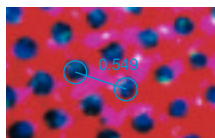
200X Contact

Die Chip



200X Non-contact

Halftone Dot



200X Contact  
with Measurement Master

Fiber Connector

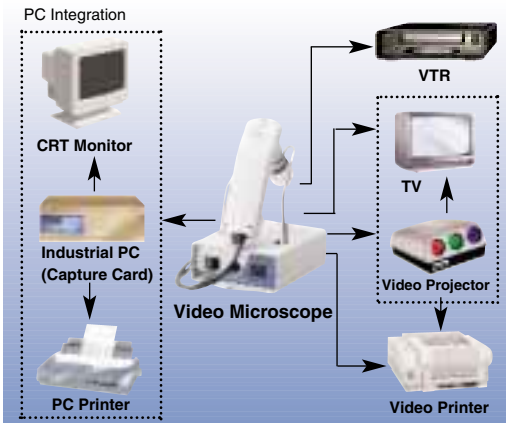


1000X Non-contact



**Chroma**

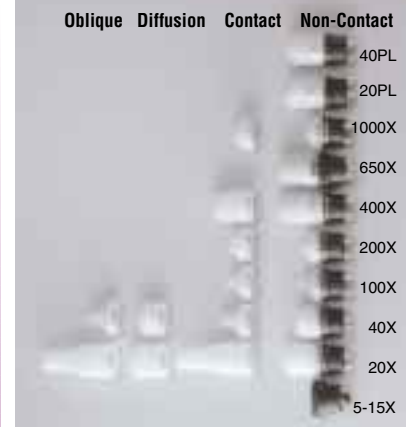
**PERIPHERALS**



**OPTIONAL ACCESSORIES**



**OPTIONAL MAGNIFICATION LENSES**



**Specifications:**

Model 7310			
<b>Camera</b>		<b>Light Source</b>	
Image pickup sensor	1/3 inch CCD	Lamp	White LED
Total pixels		Service life of lamp	5000 hrs (avg.)
NTSC	811 (H) x 508 (V)	Color temperature	7100K(max)
PAL	795 (H) x 596 (V)	Intensity regulation	Auto
Scanning method	2:1 interlaced	<b>Others</b>	
Scanning frequency		Still picture	1, 1/2 frame
NTSC	15.734 KHz (H) x 59.94 Hz (V)	Supply voltage	AC 100-240V 0.5A / DC 12V
PAL	15.625 KHz (H) x 50.00 Hz (V)	Power consumption	Less than 6W
S/N	46dB	Weight	Probe: 220g (Without Lens Head) Stand: 1.0kg
AGC	DSP Control	Dimension (mm)	Probe: 50 (W) x 160 (D) x 57 (H)(without Lens Head) Stand: 125 (W) x 190 (D) x 60 (H)
White balance	Automatic	Camera probe length	1.5 m
<b>Operating Environment</b>		<b>Outputs</b>	
Operating temperature	-5 to 40 °C	Video output	VBS1.0Vp-p / 75% RCA Type
Operating humidity	35 to 80% R.H. (without condensation)		

Model	A731026	A730001	A731027	A730015	A730002	A730028
Magnification on 14-inch monitor	5-15X	20X	20X Polarization	35X Polarization	40X	40X Polarization
Illumination head	Non-contact	Contact, Non-contact, Oblique, Diffusion	Non-contact	Contact	Contact, Non-contact, Oblique, Diffusion	Non-contact
View area	Horizontal length	56 / 18.7 mm	14 mm	14 mm	8 mm	7.5 mm
	Vertical length	42 / 14 mm	11 mm	11 mm	6 mm	6 mm
	Diagonal length	70 / 23.4 mm	17.8 mm	17.8 mm	10 mm	9.6 mm
Depth-Of-Field	† 18 / 7 mm	† 8.8 mm	† 8.8 mm	† 3.3 mm	† 3.85 mm	† 3.85 mm
Working distance (non-contact light guide applied)	160 / 40 mm	50 mm	40 mm	(contact type only)	30 mm	18 mm

Model	A730016	A730007	A730003	A730011	A731029	A730013	
Magnification on 14-inch monitor	40X LWD	100X	200X	400X	650X	1000X	
Illumination head	None	Contact, Non-contact	Contact, Non-contact	Contact, Non-contact	Contact, Non-contact	Contact, Non-contact	
View area	Horizontal length	7.5 mm	2.8 mm	1.4 mm	0.7 mm	0.43 mm	0.28 mm
	Vertical length	6 mm	2.2 mm	1.1 mm	0.52 mm	0.32 mm	0.21 mm
	Diagonal length	9.6 mm	3.56 mm	1.78 mm	0.87 mm	0.53 mm	0.35 mm
Depth-Of-Field	† 3.5 mm	† 0.55 mm	† 0.22 mm	† 0.055 mm	† 0.07 mm	† 0.066 mm	
Working distance (non-contact light guide applied)	179.5 mm	4 mm	4 mm	2.5 mm	1.4 mm	3.6 mm	

All specifications are subject to change without notice.

Developed and Manufactured by:

C H R O M A A T E I N C .

碩晶電子股份有限公司

HEAD OFFICE

No 43, Wu-Chuan Road, Wu-Ku Ind. Park, Wu-Ku, Taipei Hsien, Taiwan  
Tel: 886-2-2298-3855  
Fax: 886-2-2298-9305  
http://www.chromaate.com  
E-mail: chroma@chroma.com.tw

China

CHROMA ELECTRONICS (SHEN ZHEN) Co., Ltd.  
8F, No.4, Nanyou Tian An Industrial Estate Shenzhen, China  
Post Code: 518052  
Tel: 86-755-2664-4598  
Fax: 86-755-2641-9620

U.S.A.

CHROMA ATE INC.(U. S. A.)  
15279 Alton Parkway, Ste. 400 Irvine, CA 92618  
Tel: 1-949-421-0355  
Fax: 1-949-421-0353  
Toll Free: 1-800-478-2026

Europe

CHROMA ATE EUROPE B.V.  
Max Planckstraat 4  
6716 BE Ede,  
The Netherlands  
Tel: 31-318-648282  
Fax: 31-318-648288

Distributed by:

Worldwide Distribution and Service Network  
7310E-200106-2000